



INDEX

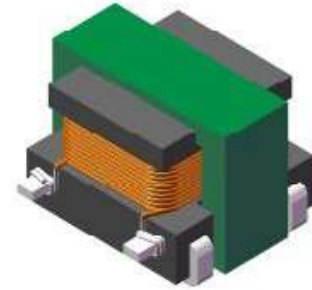
SMTEE4.4 Series.....	2
SMTEE4.4(4.7 x 3.65 x 3.55 mm).....	3
SMTEE4-B Series.....	4
SMTEE4-B(5.2 x 7.2 x 2.8 mm).....	5
SMTEE5.0 Series.....	6
SMTEE5.0(8.38 x 8.0 x 5.5 mm).....	7
SMTEE5.7 Series.....	8
SMTEE5.7(11.0 x 13.0 x 7.8 mm).....	9
SMTEE6.0 Series.....	10
SMTEE6.0(11.0 x 13.0 x 7.8 mm).....	11
SMTEE8.3-A Series.....	12
SMTEE8.3-A(11.0 x 13.0 x 7.8 mm).....	13
SMTEE8.3-B Series.....	14
SMTEE8.3-B(11.0 x 13.0 x 7.8 mm).....	15
SMTEE12.6 Series.....	16
SMTEF12.6(11.0 x 13.0 x 7.8 mm).....	17

SMTEE4.4 SERIES

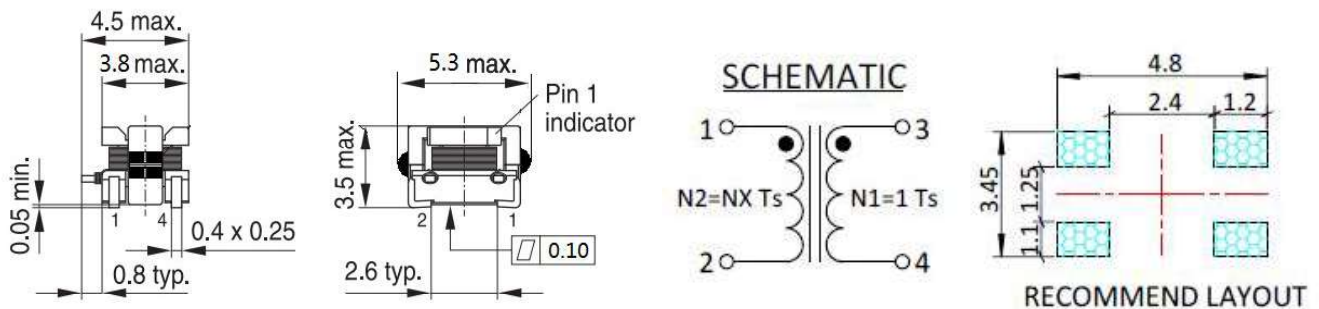
SMT CURRENT SENSE TRANSFORMERS

Applications :

- . Switching power supplies
- . feedback control
- . overload sensing.
- . Load drop/shut down detection



Shape and Dimensions (Dimensions are in mm) :



Features :

- . Very low DC resistance
- . Different turns ratios
- . Very small package
- . RoHS compatible.
- . 500Vrms, one minute isolation (hipot) between windings
- . **Sensed Current – primary rated for 7 Amps..**

Product Identification :

SMT EE4.4 - 50T -1T

1	2	3	4
---	---	---	---

- (1) Type : **Surface Mountable Type.**
- (2) Style : **EE Core with , 4.4 is size..**
- (3) Secondary Turn: 50Ts:
- (4) Primary Turn : 1Ts.

Characteristics :

- Primary current of 7 A causes less than 35°C temperature rise from 25°C ambient. Higher current causes a greater temperature rise
- . Operating temperature : -40°C to 125°C. ohmmeter
- Storage temperature Component: -40°C to +165°C
- Inductance measured between secondary pins at 100 kHz, 0.1 Vrms, 0 Adc

Test equipments :

- . Inductance measured at 0Adc on HP 4284A LCR Meter or equivalent
- . **DCR** measured on Chroma 16502 micro-ohmmeter or equivalent.
- Electrical specifications at 25°C.

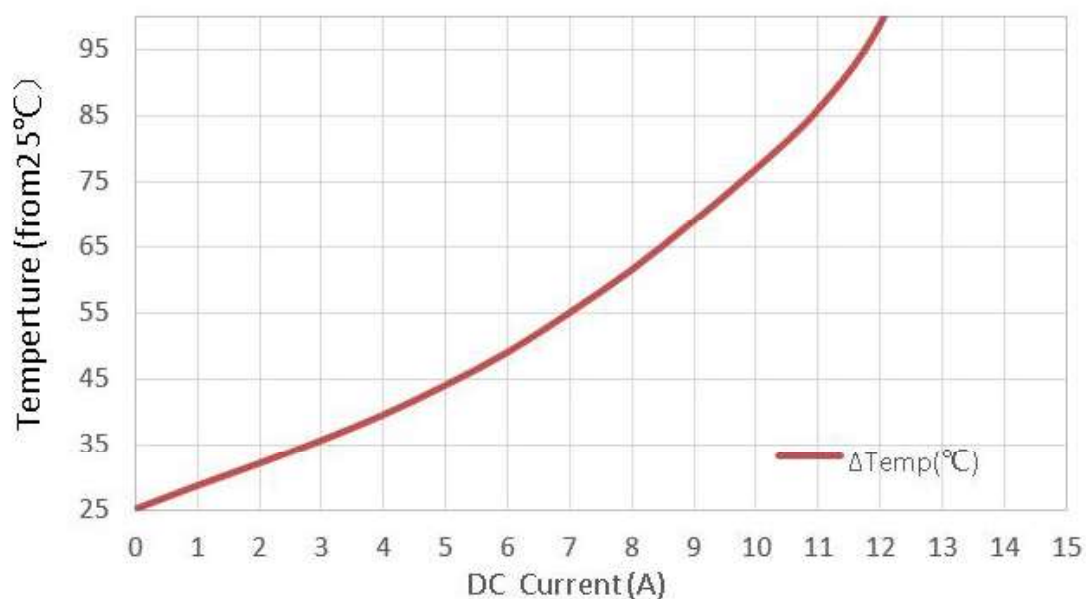
Measuring Frequency :

- SMTEE4.4 @50KHZ TO 1MHZ

● SMTEE4.4 series

Part No.	Turns ratio sec:pri	Secondary Inductance @100KHZ0.1V (uH)MIN	DCR(Ω)		Sensed Current(A) (Max)
			Sec Max	Pri Ref	
SMTEE4.4-20T-1T	20:1	33	0.35	0.003	7
SMTEE4.4-30T-1T	30:1	74	0.80	0.003	7
SMTEE4.4-40T-1T	40:1	132	1.60	0.003	7
SMTEE4.4-50T-1T	50:1	205	2.50	0.003	7
SMTEE4.4-60T-1T	60:1	295	3.60	0.003	7
SMTEE4.4-70T-1T	70:1	400	4.60	0.003	7
SMTEE4.4-100T-1T	100:1	820	9.50	0.003	7
SMTEE4.4-125T-1T	125:1	1280	13.0	0.003	7
SMTEE4.4-150T-1T	150:1	1840	21.0	0.003	7

● SMTEE4.4 Temp Rise vs Current :

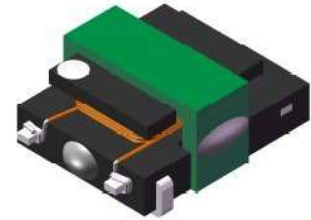


SMTEE4-B SERIES

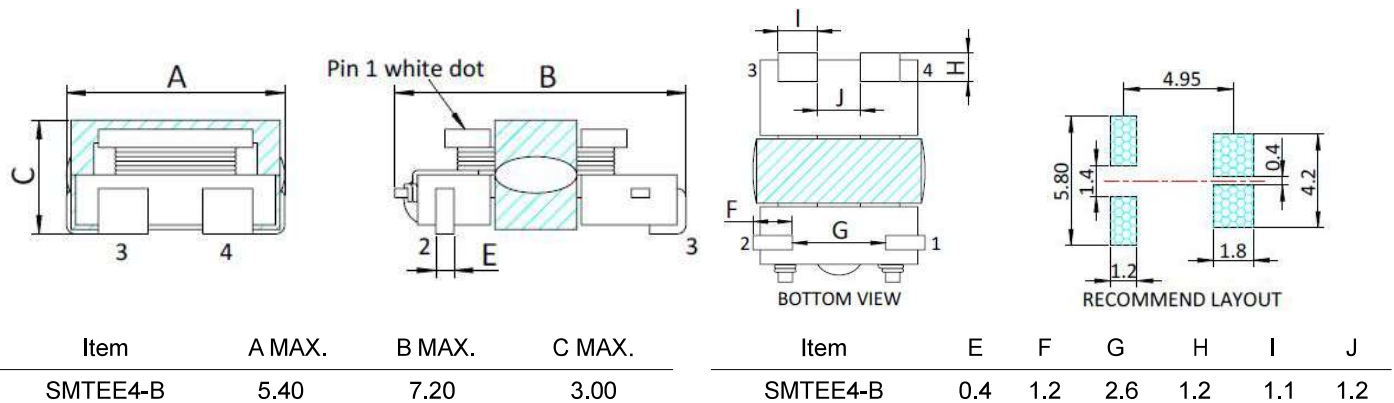
SMT CURRENT SENSE TRANSFORMERS

Applications :

- . Switching power supplies
- . feedback control
- . overload sensing.
- . Load drop/shut down detection



Shape and Dimensions (Dimensions are in mm) :



Features :

- . Very low DC resistance
- . Different turns ratios
- . Very small package
- . RoHS compatible.
- . 500Vrms, one minute isolation (hipot) between windings
- . **Sensed Current – primary rated for 20 Amps.**

Product Identification :

SMT EE 4.6- 50T -1T
1 2 3 4

- (1) Type : Surface Mountable Type.
- (2) Style : EE Core with , 4.6 is size..
- (3) Secondary Turn: 50Ts:
- (4) Primary Turn : 1Ts.

Characteristics :

- Primary current of 9A causes less than 40°C temperature rise from 25°C ambient. Higher current causes a greater temperature rise
- . Operating temperature : -40°C to 125°C. ohmmeter
- Storage temperature Component: -40°C to +165°C
- Inductance measured between secondary pins at 100 kHz, 0.1 Vrms, 0 Adc

Test equipments :

- . Inductance measured at 0Adc on HP 4284A LCR Meter or equivalent
- . DCR measured on Chroma 16502 micro-ohmmeter or equivalent.
- Electrical specifications at 25°C.

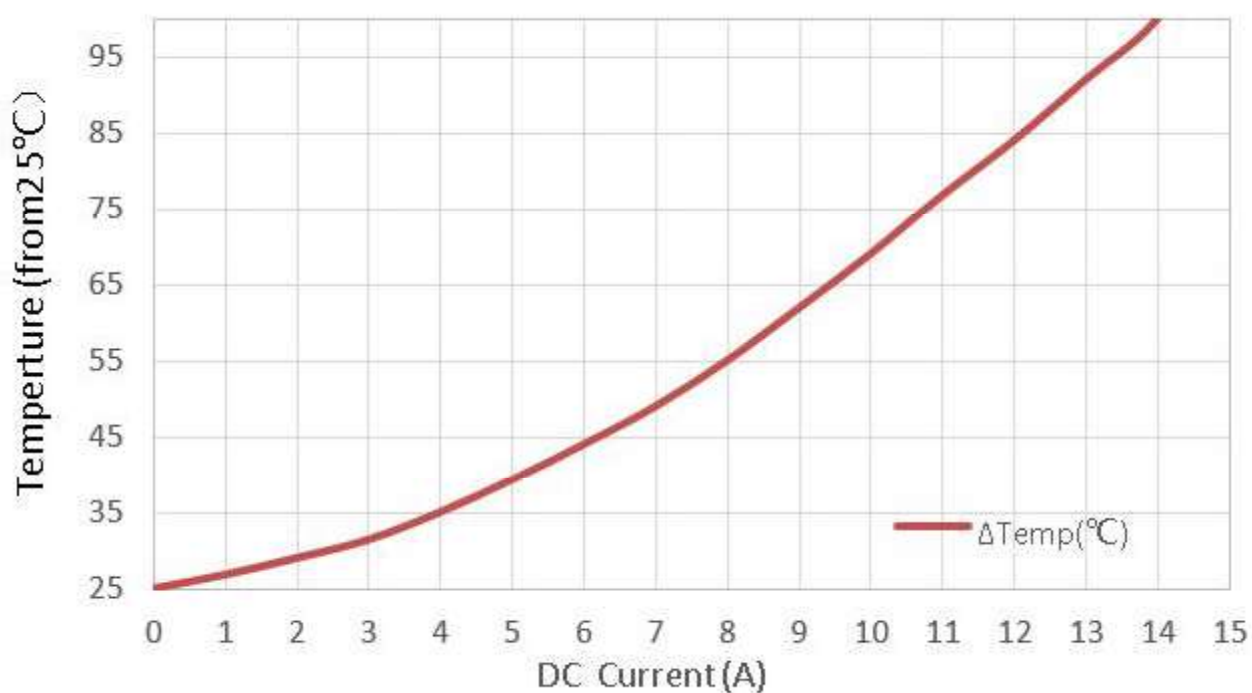
Measuring Frequency :

- SMTEE4-B @50KHZ TO 1MHZ

● SMTEE4-B series

Part No.	Turns ratio sec:pri	Secondary Inductance @100KHZ0.1V (mH)MIN	DCR(Ω)		Sensed Current(A) (Max)
			Sec Max	Pri Ref	
SMTEE4-B-20T-1T	20:1	0.053	0.42	0.0015	9
SMTEE4-B-50T-1T	50:1	0.333	2.76	0.0015	9
SMTEE4-B-70T-1T	70:1	0.652	5.04	0.0015	9
SMTEE4-B-100T-1T	100:1	1.330	10.68	0.0015	9
SMTEE4-B-150T-1T	150:1	2.993	22.30	0.0015	9

● SMTEE4-B Temp Rise vs Current :



SMTEE5.0 SERIES

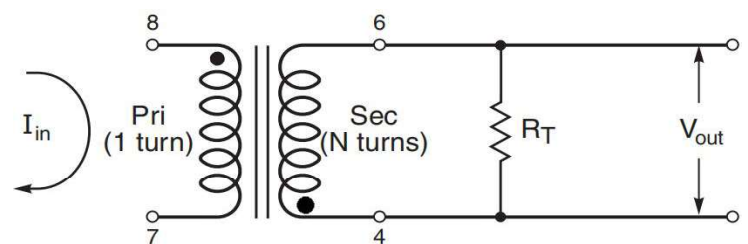
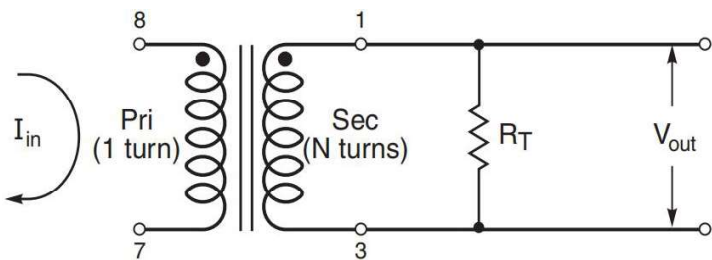
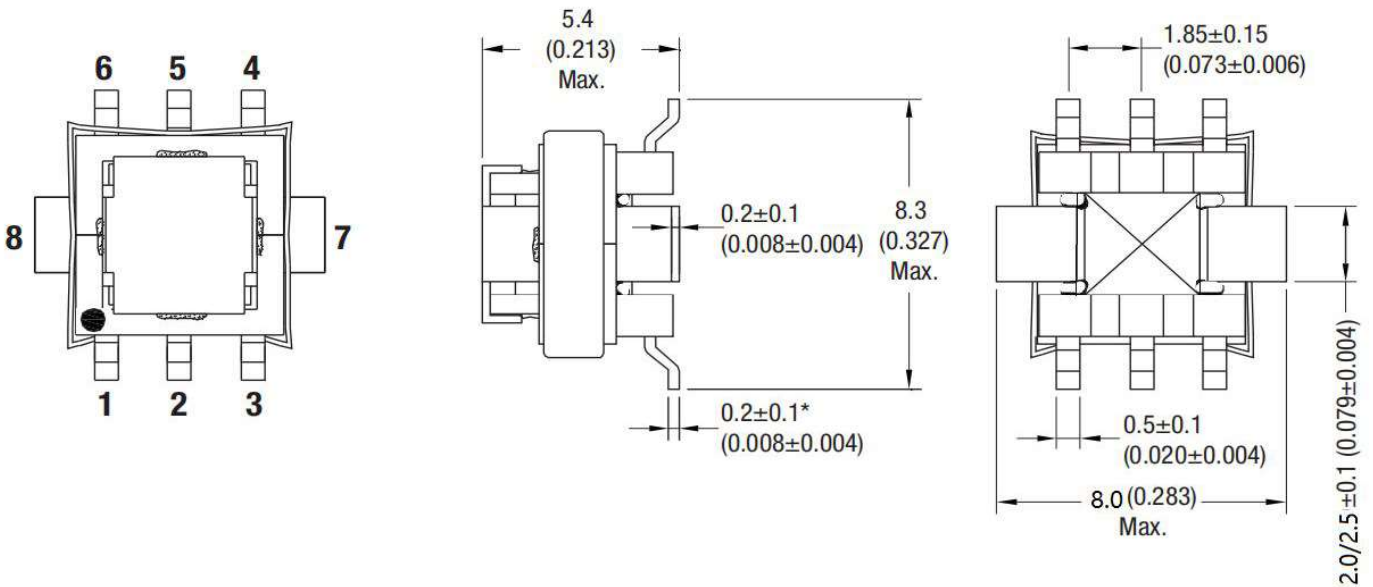
Outgassing Compliant Current Sensors

Applications :

- . Switching power supplies
- . Feedback control.
- . Overload sensing.
- . Load drop/shut down detection.



Shape and Dimensions (Dimensions are in mm):



Features :

- . Very low DC resistance.
- . Different turns ratios.
- . Small package.
- . Other pinning on request.

Product Identification :

SMTEE5.0 – 100T-1T

1 2 3 4

(1) Type : **Surface Mountable Type.**

(2) Style : **EE Core , 5.0 is size.**

(3) Secondary turns : **100T**

Characteristics :

- Temperature Rise Current(Irms):The current when temperature of coil increases up to max. $\Delta T=40^{\circ}\text{C}$.($T_a=20^{\circ}\text{C}$)
- Operating temperature : -40°C to 125°C .

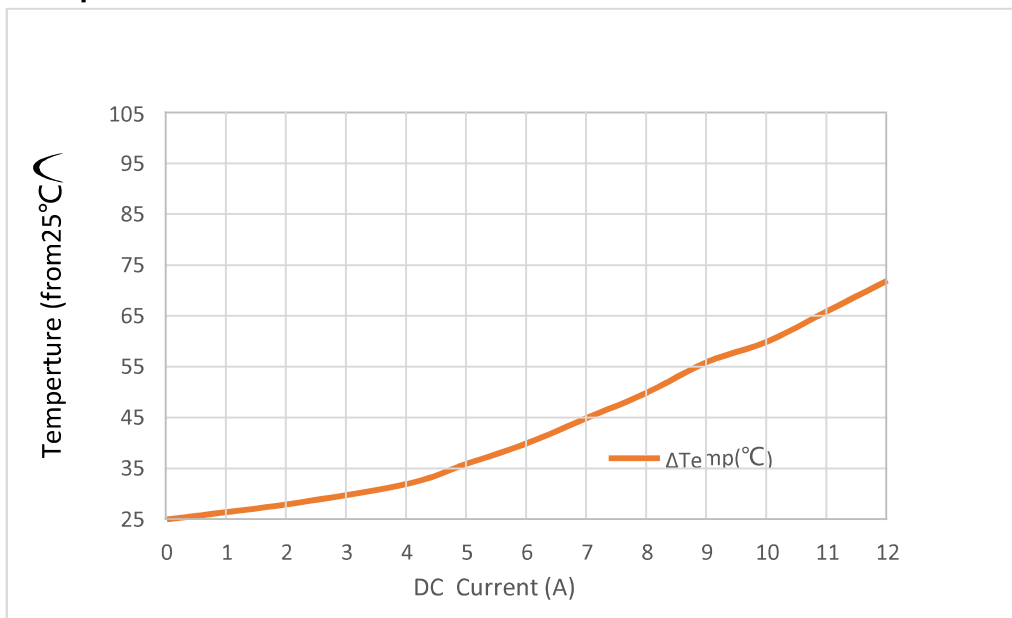
Test equipments :

- L: HP4284A PRECISION LCR METER
- DCR: CHENHWA 502 OHM METER
- Electrical specifications at 25°C .

● SMTEE5.0 series

Part No.	Turns ratio sec:pri	Secondary Inductance @100KHZ0.1V (uH)MIN	DCR(Ω)		Primary Current(A) (Max)
			Sec Max	Pri Ref	
SMTEE5.0-20T-1T	20:1	80	0.40	0.0007	10/20
SMTEE5.0-30T-1T	30:1	180	0.87	0.0007	10/20
SMTEE5.0-40T-1T	40:1	320	1.14	0.0007	10/20
SMTEE5.0-50T-1T	50:1	500	1.85	0.0007	10/20
SMTEE5.0-60T-1T	60:1	730	2.30	0.0007	10/20
SMTEE5.0-70T-1T	70:1	980	4.75	0.0007	10/20
SMTEE5.0-100T-1T	100:1	2000	5.50	0.0007	10/20
SMTEE5.0-125T-1T	125:1	3000	11.50	0.0007	10/20

● SMTEE5.0 Temp Rise vs Current

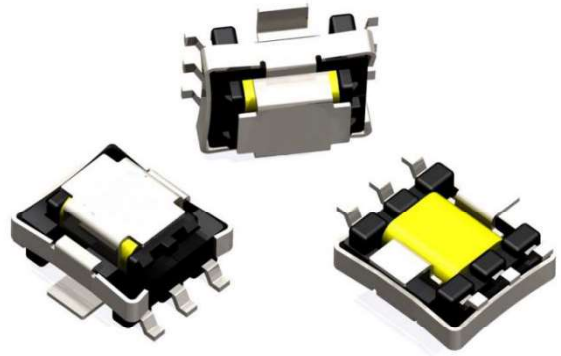


SMTEE5.7 SERIES

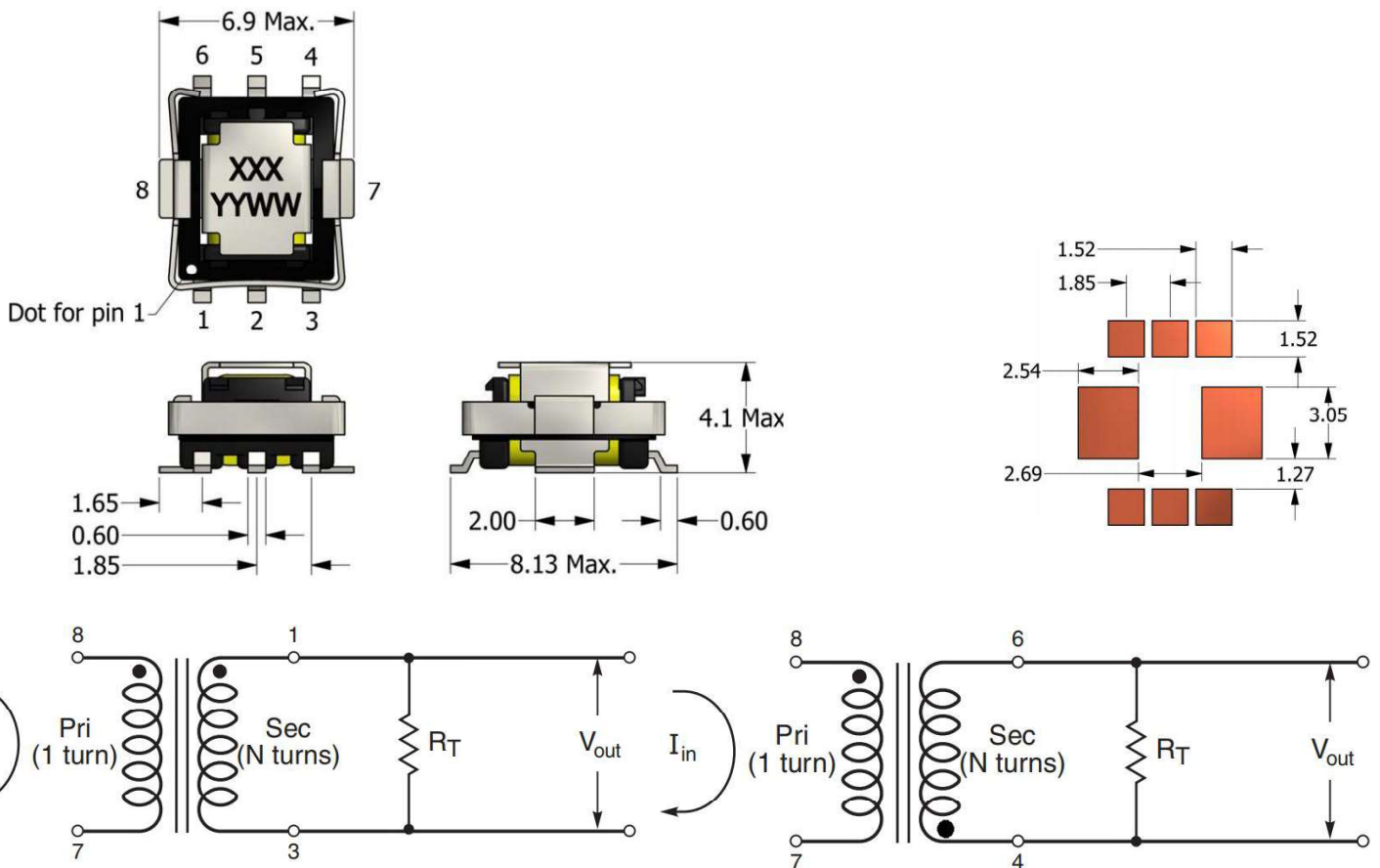
Outgassing Compliant Current Sensors

Applications :

- . Switching power supplies
- . Feedback control.
- . Overload sensing.
- . Load drop/shut down detection.



Shape and Dimensions (Dimensions are in mm):



Features :

- . Very low DC resistance.
- . Different turns ratios.
- . Small package.
- . Other pinning on request.

Product Identification :

SMTEE5.7 – 100T-1T

1 2 3 4

(1) Type : **Surface Mountable Type.**

(2) Style : **EE Core , 5.7 is size.**

(3) Secondary turns : **100T**

Characteristics :

- Temperature Rise Current(Irms):The current when temperature of coil increases up to max. $\Delta T=40^{\circ}C$.($T_a=20^{\circ}C$)
- Operating temperature : $-40^{\circ}C$ to $125^{\circ}C$.

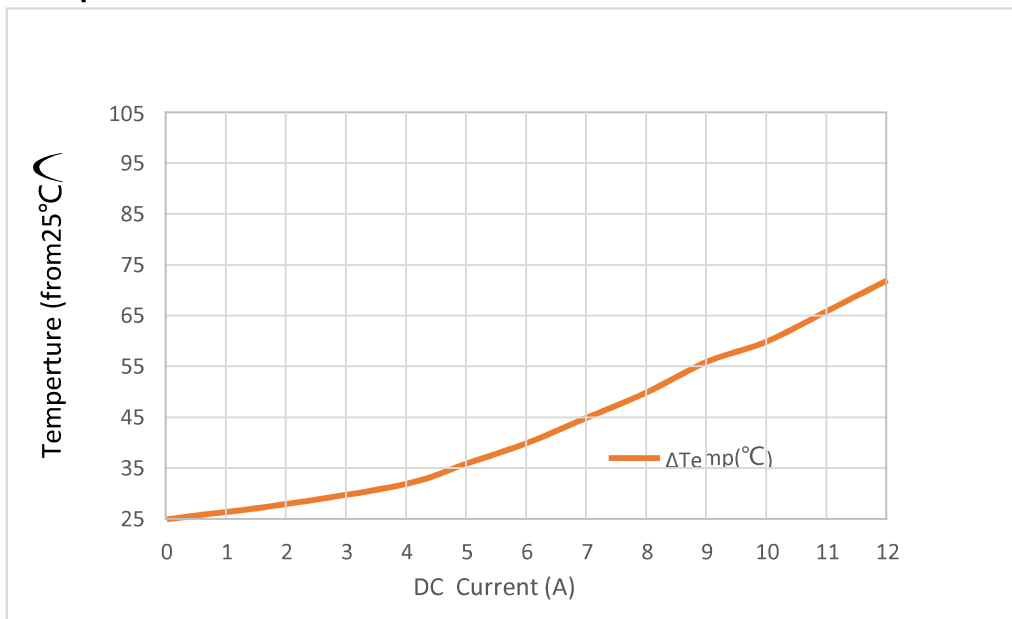
Test equipments :

- L: HP4284A PRECISION LCR METER
- DCR: CHENHWA 502 OHM METER
- Electrical specifications at $25^{\circ}C$.

● SMTEE5.7 series

Part No.	Turns ratio sec:pri	Secondary Inductance @100KHZ0.1V (uH)MIN	DCR(Ω)		Primary Current(A) (Max)
			Sec Max	Pri Ref	
SMTEE5.7-50T-1T	50:1	352	0.90	0.0007	20
SMTEE5.7-70T-1T	70:1	690	1.70	0.0007	20
SMTEE5.7-100T-1T	100:1	1400	3.00	0.0007	20
SMTEE5.7-125T-1T	125:1	2200	5.00	0.0007	20

● SMTEE5.7 Temp Rise vs Current



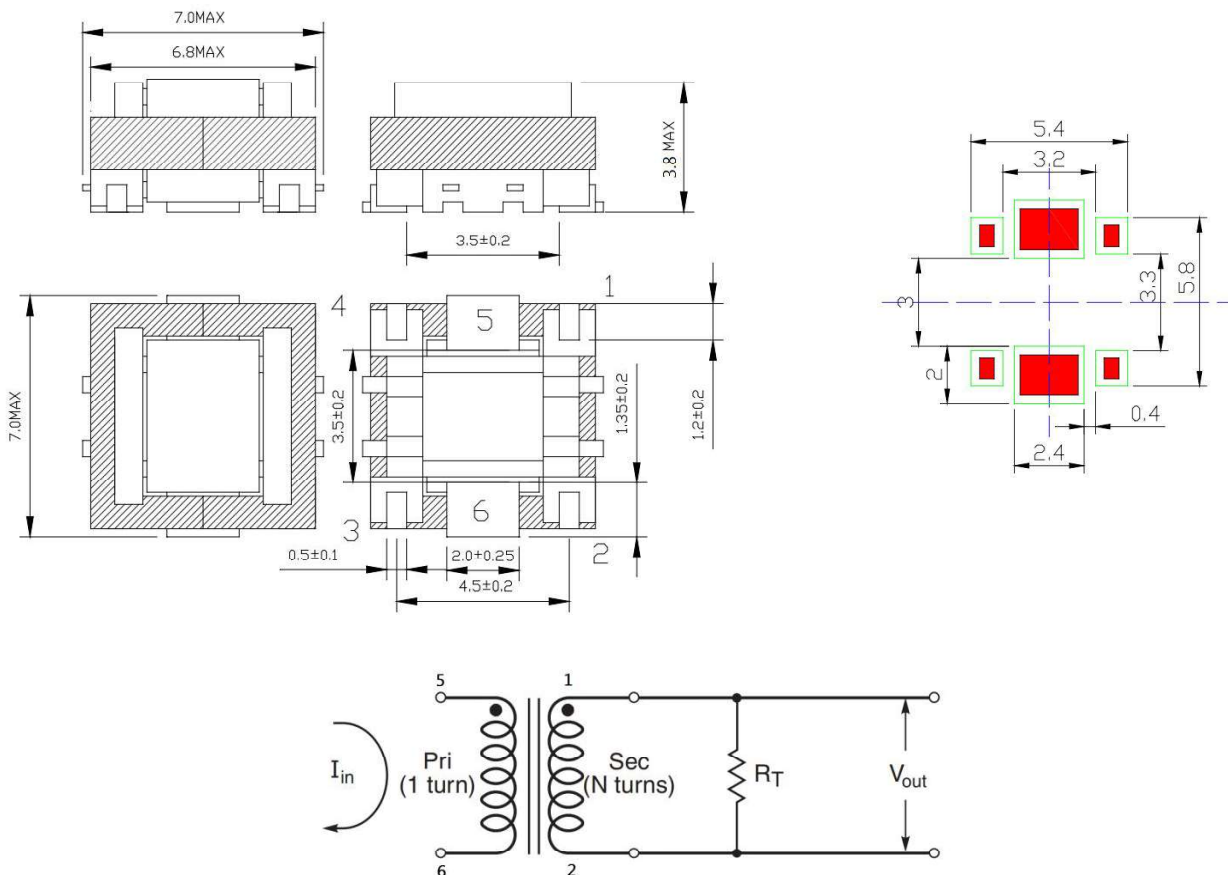
SMTEE6.0 SERIES

Outgassing Compliant Current Sensors

Applications :

- . Switching power supplies
- . Feedback control.
- . Overload sensing.
- . Load drop/shut down detection.

Shape and Dimensions (Dimensions are in mm):



Features :

- . Very low DC resistance.
- . Different turns ratios.
- . Small package.
- . Other pinning on request.

Product Identification :

SMTEE6.0 – 100T-1T

1 2 3 4

(1) Type : **Surface Mountable Type.**

(2) Style : **EE Core , 6.0 is size.**

(3) Secondary turns : **100T**

Characteristics :

- . Temperature Rise Current(Irms):The current when temperature of coil increases up to max. $\Delta T=40^{\circ}\text{C}$.($T_a=20^{\circ}\text{C}$)
- . Operating temperature : -40°C to 125°C .

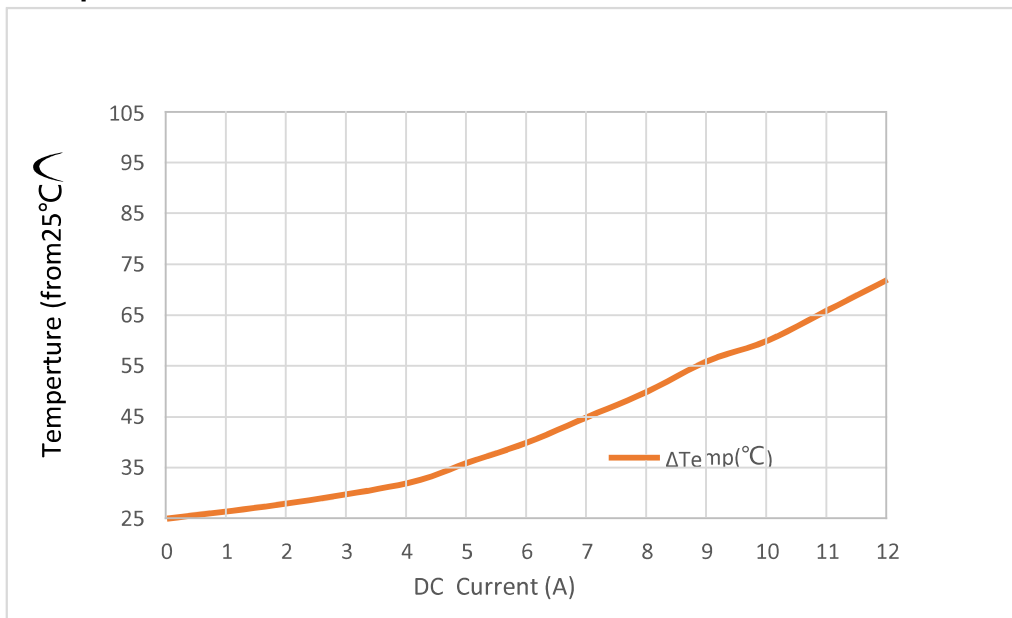
Test equipments :

- . L: HP4284A PRECISION LCR METER
- . DCR: CHENHWA 502 OHM METER
- . Electrical specifications at 25°C .

● SMTEE6.0 series

Part No.	Turns ratio sec:pri	Secondary Inductance @100KHZ0.1V (uH)MIN	DCR(Ω)		Primary Current(A) (Max)
			Sec Max	Pri Ref	
SMTEE6.0-100T-1T	100:1	800	0.90	0.0007	10

● SMTEE6.0 Temp Rise vs Current

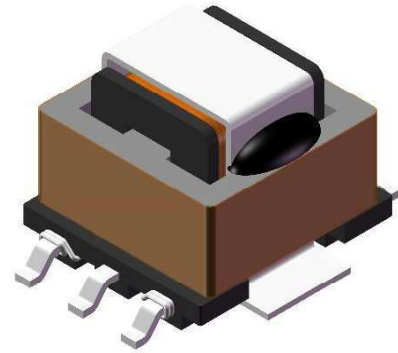


SMTEE8.3-A SERIES

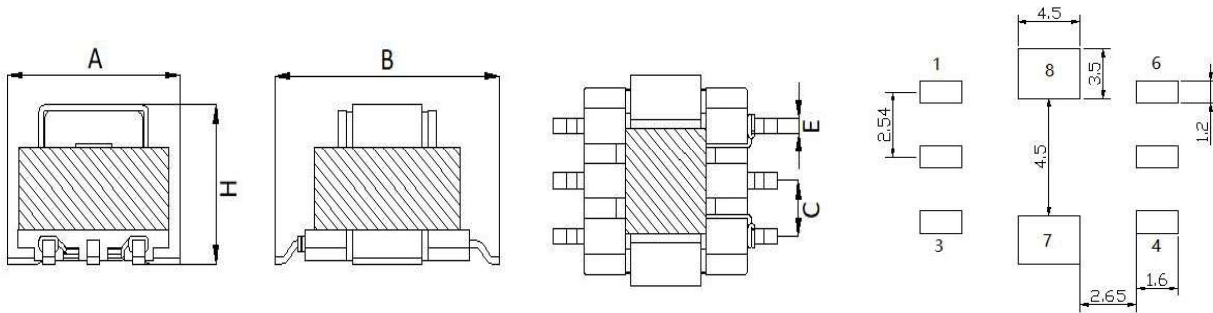
High Frequency Current Sensing Transformers

Applications :

- . Power supply for VTRs.
- . Small surface mount current sensors
- . Sensed current up to 30A; Frequency range up to 1MHz
- . Very low primary DC resistance
- . 1.0KV DC/3mA / 1S isolation (hipot) between windings
- . LCD televisions, Notebook PCs, Portable communication equipment, DC/DC converters, etc.



Shape and Dimensions (Dimensions are in mm):



Item	A MAX.	B MAX.	H MAX.
SMTEE8.3-A	9.70	12.80	7.00

Item	C	E
SMTEE8.3-A	2.50	1.00

Features :

- . Very low DC resistance.
- . Different turns ratios.
- . Small package.
- . Other pinning on request.

Product Identification :

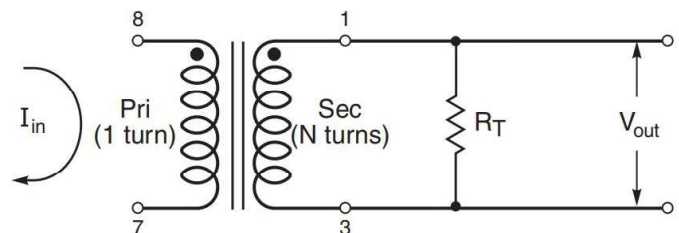
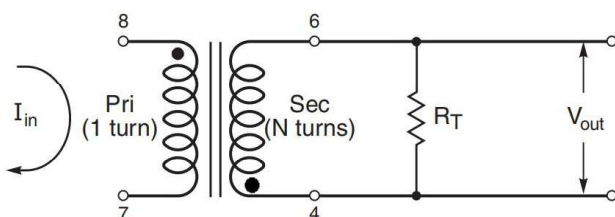
SMTEE8.3-A – 100T-1T

1 2 3 4

(1) Type : **Surface Mountable Type.**

(2) Style : **EE Core , 8.3 is size.**

(3) Secondary turns : **100T**



Characteristics :

- Temperature Rise Current(Irms):The current when temperature of coil increases up to max.ΔT=40°C.(Ta=20°C)
- Operating temperature : -40°C to 125°C.

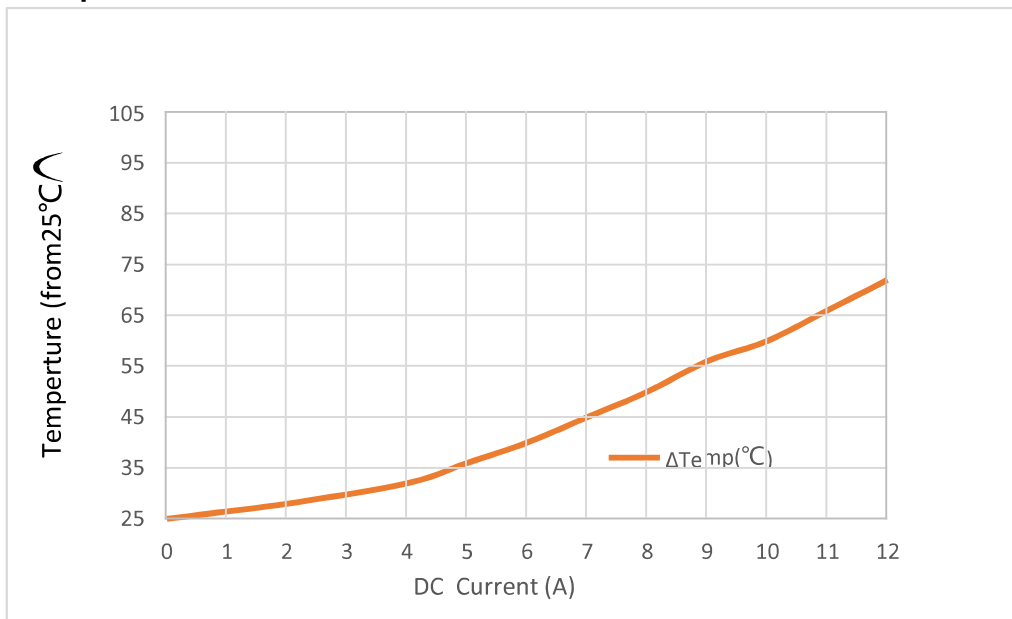
Test equipments :

- L: HP4284A PRECISION LCR METER
- DCR: CHENHWA 502 OHM METER
- Electrical specifications at 25°C.

● SMTEE8.3-A series

Part No.	Turns ratio sec:pri	Secondary Inductance @100KHZ0.1V (MH)MIN	DCR(Ω)		Primary Current(A) (Max)
			Sec Max	Pri Ref	
SMTEE8.3-A-50T-1T	50:1	0.63	0.60	0.0039	30
SMTEE8.3-A-100T-1T	100:1	2.50	3.00	0.0039	30
SMTEE8.3-A-150T-1T	150:1	5.63	5.70	0.0039	30
SMTEE8.3-A-200T-1T	200:1	10.0	10.0	0.0039	30
SMTEE8.3-A-300T-1T	300:1	22.5	25.0	0.0039	30

● SMTEE8.3-A Temp Rise vs Current

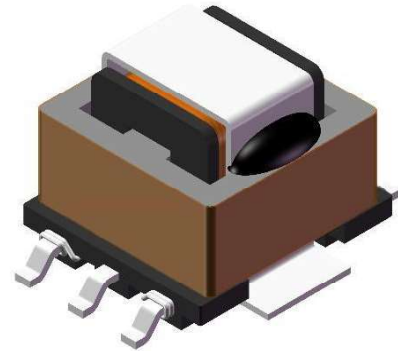


SMTEE8.3-B SERIES

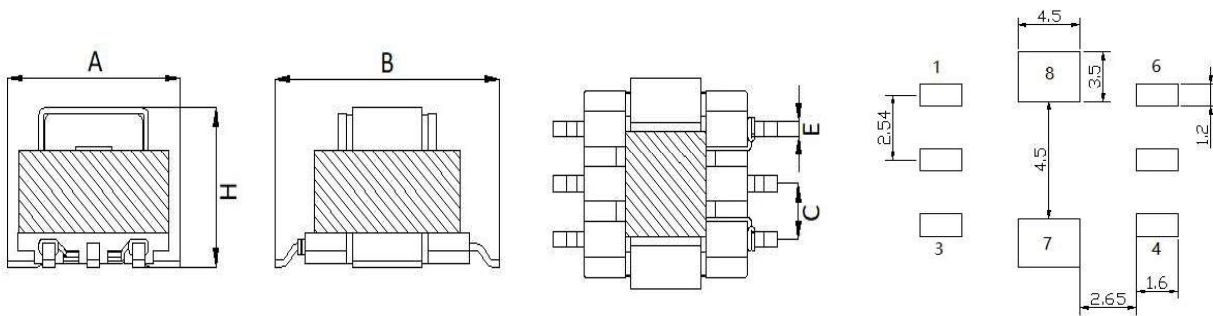
High Frequency Current Sensing Transformers

Applications :

- . Power supply for VTRs.
- . Small surface mount current sensors
- . Sensed current up to 30A; Frequency range up to 1MHz
- . Very low primary DC resistance
- . 1.0KV DC/3mA / 1S isolation (hipot) between windings
- . LCD televisions, Notebook PCs, Portable communication equipment, DC/DC converters, etc.



Shape and Dimensions (Dimensions are in mm):



Item	A MAX.	B MAX.	H MAX.
SMTEE8.3-B	11.00	13.00	7.80

Item	C	E
SMTEE8.3-A	2.50	0.70

Features :

- . Very low DC resistance.
- . Different turns ratios.
- . Small package.
- . Other pinning on request.

Product Identification :

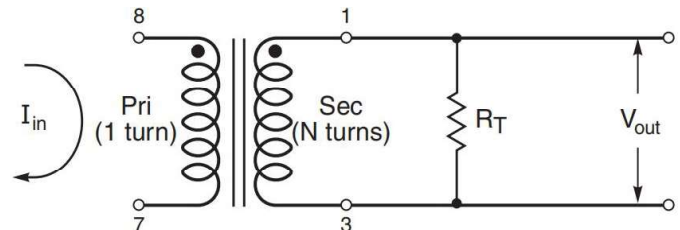
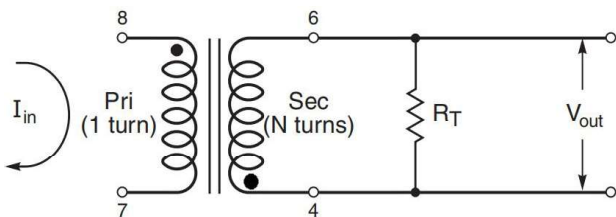
SMTEE8.3-B – 100T-1T

1 2 3 4

(1) Type : Surface Mountable Type.

(2) Style : EE Core , 8.3 is size.

(3) Secondary turns : **100T**



Characteristics :

- Temperature Rise Current(Irms):The current when temperature of coil increases up to max. $\Delta T=40^{\circ}C$.($T_a=20^{\circ}C$)
- Operating temperature : $-40^{\circ}C$ to $125^{\circ}C$.

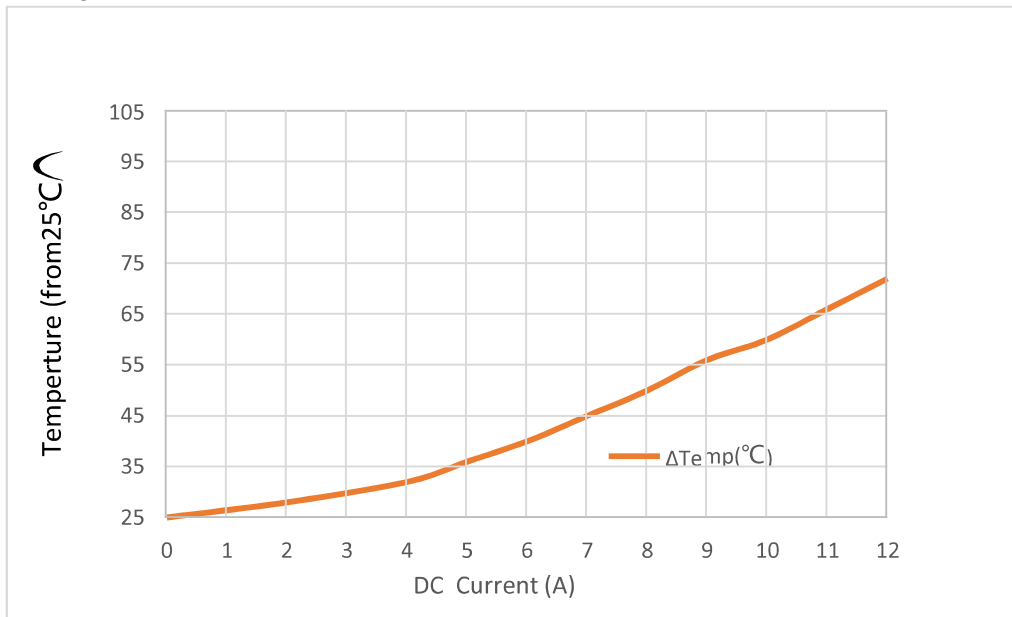
Test equipments :

- L: HP4284A PRECISION LCR METER
- DCR: CHENHWA 502 OHM METER
- Electrical specifications at $25^{\circ}C$.

● SMTEE8.3-B series

Part No.	Turns ratio sec:pri	Secondary Inductance @100KHZ0.1V (MH)MIN	DCR(Ω)		Primary Current(A) (Max)
			Sec Max	Pri Ref	
SMTEE8.3-B-50T-1T	50:1	1.40	0.65	0.0039	30
SMTEE8.3-B-100T-1T	100:1	5.60	2.00	0.0039	30
SMTEE8.3-B-125T-1T	125:1	8.70	5.20	0.0039	30
SMTEE8.3-B-150T-1T	150:1	12.60	6.50	0.0039	30
SMTEE8.3-B-200T-1T	200:1	22.0	8.00	0.0039	30

● SMTEE8.3-B Temp Rise vs Current



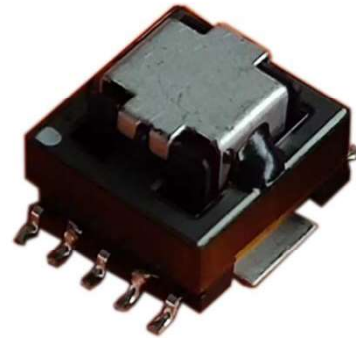
● **SMTEE12.6 Packing Spec:**

SMTEE12.6 SERIES

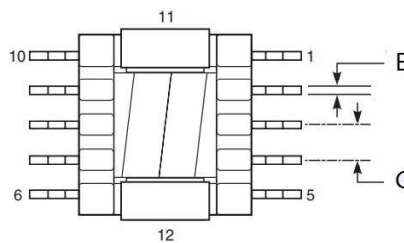
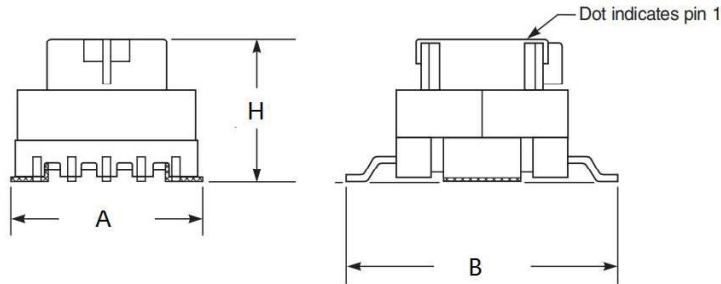
SMT CURRENT SENSE TRANSFORMERS

Applications :

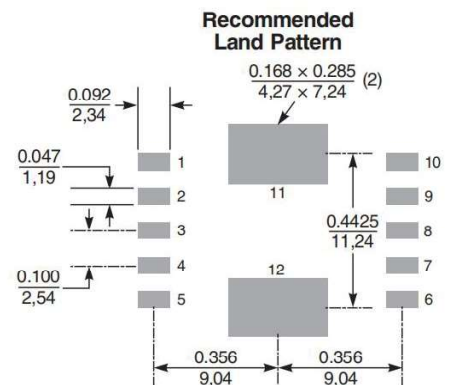
- . Power supply for VTRs.
- . Small surface mount current sensors
- . Sensed current up to 35A; Frequency range up to 1MHz
- . Very low primary DC resistance
- . 1.0KV DC/3mA / 1S isolation (hipot) between windings
- . LCD televisions, Notebook PCs, Portable communication equipment, DC/DC converters, etc.



Shape and Dimensions (Dimensions are in mm) :



Dimensions are in $\frac{\text{inches}}{\text{mm}}$



Item	A MAX.	B MAX.	C MAX.	Item	E	H MAX
SMTEE12.6	15.0	20.0	2.50	SMTEE12.6	0.7	10.50

Features :

- . Very low DC resistance
- . Different turns ratios
- . Very small package
- . RoHS compatible.
- . 1000Vrms, one minute isolation (hipot) between windings

Product Identification :

SMT EE12.6 - 50T -1T
1 2 3 4

- (1) Type : Surface Mountable Type.
- (2) Style : EE Core with , 12.6 issize..
- (3) Secondary Turn: 50Ts:

temperature rise from 25°C ambient. Higher current causes a greater temperature rise

Measuring Frequency :

- SMTEE12.6 @50KHZ TO 1MHZ

● **SMTEE12.6 series**

Part No.	Turns ratio sec:pri	Secondary Inductance @100KHZ0.1V (MH)MIN	DCR(Ω)		Primary Current(A) (Max)
			Sec Max	Pri Ref	
SMTEE12.6-50T-1T	50:1	1.40	0.70	0.0042	35
SMTEE12.6-100T-1T	100:1	5.60	1.40	0.0042	35
SMTEE12.6-150T-1T	150:1	12.60	2.40	0.0042	35
SMTEE12.6-200T-1T	200:1	22.4	2.90	0.0042	35

● **SMTEE12.6 Temp Rise vs Current**

